

Chapter 4

Gaze-Based Assistive Technologies

Thies Pfeiffer
Bielefeld University, Germany

ABSTRACT

The eyes play an important role both in perception and communication. Technical interfaces that make use of their versatility can bring significant improvements to those who are unable to speak or to handle selection tasks otherwise such as with their hands, feet, noses or tools handled with the mouth. Using the eyes to enter texts into a computer system, which is called gaze-typing, is the most prominent gaze-based assistive technology. The article reviews the principles of eye movements, presents an overview of current eye-tracking systems, and discusses several approaches to gaze-typing. With the recent advent of mobile eye-tracking systems, gaze-based assistive technology is no longer restricted to interactions with desktop-computers. Gaze-based assistive technology is ready to expand its application into other areas of everyday life. The second part of the article thus discusses the use of gaze-based assistive technology in the household, or “the wild,” outside one’s own four walls.

INTRODUCTION

How exciting is the first eye contact with a new born baby and his parents. How overwhelming the moment when the eyes start exploring the world and the head movement follows the eyes. And how ground-shaking the effect once the baby’s eyes can follow the attentive gaze of her parents (Corkum & Moore, 1998; Hood, Willen & Driver, 1998) or find the target beyond the pointing finger (Butterworth & Itakura, 2000).

Eyes are a powerful device for communication—they tell a lot about us, our intentions, what we are talking about, whom we are talking to, and they even reveal parts of our emotions. They are

part of a multimodal communicative ensemble that is our human body.

For some, however, the eyes are also the one and only gate to the outside world. We humans are often very good in a situated reading of the intentions of others just by observing their eyes. If someone we care for is gazing at a glass of water, which to him is out of reach, we infer that he might be thirsty, offer our help and give him to drink. If we talk to someone unable to speak or move, we can establish a pact and tailor our questions in such a way, that our interlocutor can answer them using eye blinks (e.g. one for no, two for yes) or eye movements (up/down or left/right).

This chapter addresses the question on how gaze-based assistive technologies enable us to make use of our eyes for purposes that are beyond

DOI: 10.4018/978-1-4666-4438-0.ch004

their natural sensory use. It will show that today it is already possible to talk with our eyes and even to write letters. Someday we will also be able to interact with our (technically enhanced) physical environment based on eye gaze and first visionary steps into that direction will be presented.

Gaze-Based Interaction and the Midas-Touch Problem

A crucial task in interaction is the selection of the object to interact with. For a successful selection, one has to aim at a target and then trigger the selection (see e.g. Huckauf & Urbina, 2008). While aiming at a specific target is the example par excellence for an appropriate gaze-based interaction, it proves to be more difficult to actually trigger the selection.

The problem of providing a robust but also swift technique to trigger a selection is common for many gaze-based applications. The eye is predominantly a sensory organ which is now, in gaze-based interaction, used in an articulatory way. For articulation we want to have a high and exclusive control over our modality, so that we are not to be misunderstood. Gaze, however, wanders over the scene while we process it and it is highly attracted to changes in the environment. Users might thus look at a certain key on the screen because they want to type, but they might also just accidentally look there, e.g. while listening to a response, or just because the keys' depictions of a virtual keyboard switched from lower to upper case after triggering the "shift"-key. Other visual changes might, e.g., be the result of the intelligent algorithm that rearranges the display to present the keys most likely selected next at a prominent position.

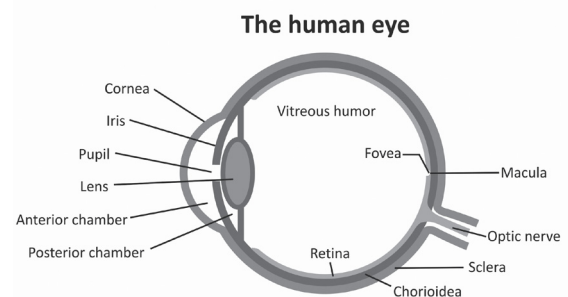
The problem of unwillingly triggering reactions is known as the Midas-Touch problem, since a prominent paper by R.J.K. Jacob (1993).

Parameters of Eye Gaze

Our eyes are active sensory organs. They are sensors that capture light that is cast from the objects in our environment and project them internally on a light-sensitive surface, the retina (see Figure 1). The resolution of the retina, however, is not equally distributed. We have a certain circular area of very high acuity, the fovea, and acuity diminishes the further away from the fovea the incoming rays hit the surface. The field of view covered by the fovea is rather small, only 1-2°, which is approximately the area covered by 1-2 thumbs when extended at arm's length.

Interestingly, we are seldom aware of objects we can only see with a very low acuity. This is where the active part comes in: we constantly orient our eyes towards the area in our field of view we want to inspect. And we do it in such a way, that the interesting parts fall onto the fovea. These visual inspection movements are very quick – the eye is in general a very high speed device with a peak angular velocity of 900°/sec. That would be nearly three full rotations per second. Thus when we see something of interest in the periphery, which has a low visual acuity, we orient our eyes swiftly towards the target and will thus bring the target within our field of high visual acuity.

Figure 1. The eye is optimized to perceive the environment with a high acuity only in the area of the fovea



18 more pages are available in the full version of this document, which may be purchased using the "Add to Cart" button on the publisher's webpage:

www.igi-global.com/chapter/gaze-based-assistive-technologies/78425

Related Content

Elderly Inmates Living With Dementia in Central Prisons

S. Srinivasan, N. Rajaveland Mohsen Mahmoudi-Dehaki (2025). *Assistive Technology Solutions for Aging Adults and Individuals With Disabilities* (pp. 343-404).

www.irma-international.org/chapter/elderly-inmates-living-with-dementia-in-central-prisons/368139

Assistive Technologies Transforming the Lives of Learners With Disabilities in Higher Education: The South African University Context

Vannie Naidoo (2022). *Assistive Technologies for Differently Abled Students* (pp. 1-18).

www.irma-international.org/chapter/assistive-technologies-transforming-the-lives-of-learners-with-disabilities-in-higher-education/305461

Wired and Wireless Distributed e-Home Healthcare System

Booma Devi Sekar, JiaLi Maand MingChui Dong (2016). *Optimizing Assistive Technologies for Aging Populations* (pp. 207-250).

www.irma-international.org/chapter/wired-and-wireless-distributed-e-home-healthcare-system/137795

Consumer and Lifestyle

(2014). *Enhancing the Human Experience through Assistive Technologies and E-Accessibility* (pp. 196-217).

www.irma-international.org/chapter/consumer-and-lifestyle/109954

Use of Audio-Based Mobile Assistant for Reading Texts as Support for Blind Users

Alfonso Sánchez Orea (2020). *User-Centered Software Development for the Blind and Visually Impaired: Emerging Research and Opportunities* (pp. 116-136).

www.irma-international.org/chapter/use-of-audio-based-mobile-assistant-for-reading-texts-as-support-for-blind-users/231086