

# Chapter 13

## Using SocLab for a Rigorous Assessment of the Social Feasibility of Agricultural Policies

**Françoise Adreit**

*Université Toulouse 2 - Le Mirail, France*

**Pascal Roggero**

*Université Toulouse 1 - Capitole, France*

**Christophe Sibertin-Blanc**

*Université Toulouse 1 - Capitole, France*

**Claude Vautier**

*Université Toulouse 1 - Capitole, France*

### ABSTRACT

*This paper presents a theoretical and methodological framework to take into consideration the social dimension in a sustainable development project. To do this, the authors have developed the SocLab software environment, which implements a formalization of a well-established sociological theory, and enables the modeling of social organizations, to analyze their properties and to simulate social actors' behaviors. SocLab was used to assess the social acceptability of new agricultural practices more in line with the preservation of water resources and natural environments, in a well defined context. The paper shows how it was used and presents the main results.*

### 1. INTRODUCTION

The reference model for sustainable development gives an equal importance to the economic, environmental and social dimensions. In practice, little attention is paid to the social dimension: the

biophysical aspects and the economic cost of the environmental degradation and its compensation by public policies are considered with much more attention. This situation is due, to a large amount, to the informal and subjective nature of the results provided by sociological studies; they do not

DOI: 10.4018/978-1-4666-0333-2.ch013

feature the properties of quantitative scientific knowledge, and they are difficult to handle and to merge with the results provided by economics and environmental sciences.

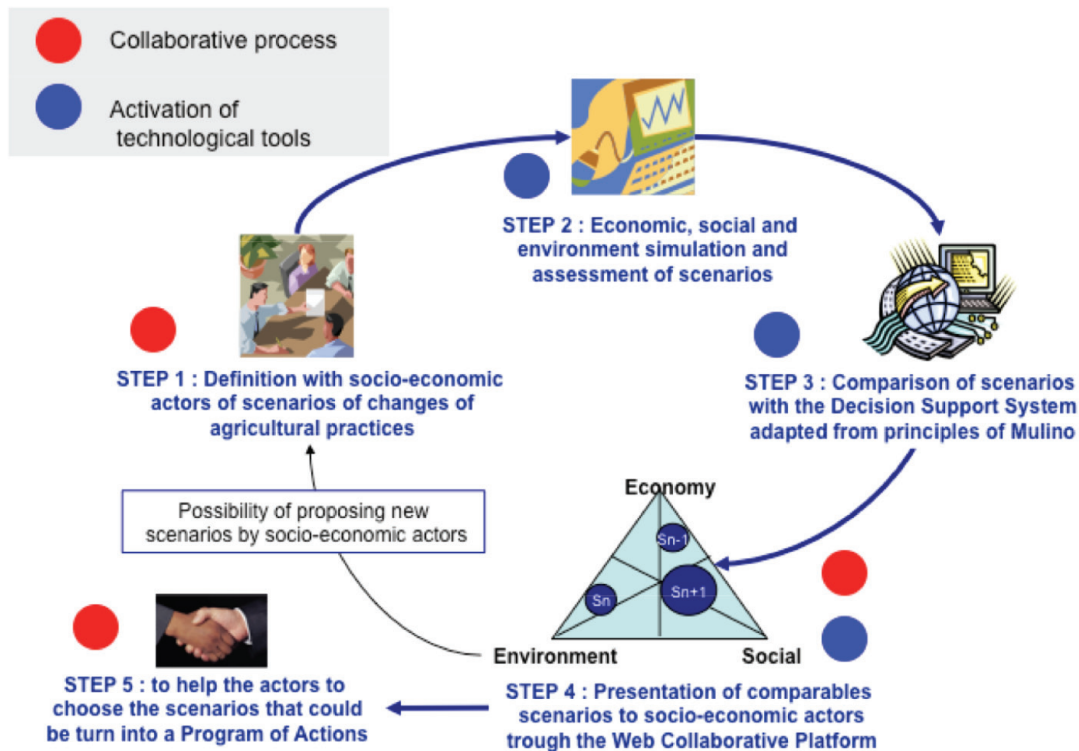
As a foreseeable consequence of this lack of attention to the social dimension, many public policies are quite ineffective to change the social practices toward the desirable direction. The social impact of the proposed measures raising some fears, they are not accepted by the actors and thus they are not applied (Vautier et al., 2009).

The *Life* European project *Concert'Eau* was a proof-of-concept project aiming at demonstrating the feasibility to define a set of new agricultural measures proposed and accepted by the stakeholders, following the process shown in Figure 1. In this project, we were in charge, in the step 2, to assess the social acceptability of the measures proposed during the step 1. To provide a quantitative evaluation of the social dimension of

each proposed measure, we have used a rigorous theoretical and methodological framework whose generic nature makes it appropriate to model and analyze the social dimension of other cases:

- We base our work on a well-established social theory, the Sociology of the Organized Action (section 2);
- We have formalized this theory as a meta-model for the description of social organizations in a rigorous way (section 3);
- We have implemented a software platform, *SocLab*, which enables to edit the model of an organization, to explore its states and to simulate the behavior of the social actors (section 4).
- Section 5 presents how we have used this framework to estimate the social feasibility of agricultural measures in the *Concert'Eau* project.

Figure 1. The process of the *Concert'Eau* project



14 more pages are available in the full version of this document, which may be purchased using the "Add to Cart" button on the publisher's webpage:  
[www.igi-global.com/chapter/using-soclab-rigorous-assessment-social/63764](http://www.igi-global.com/chapter/using-soclab-rigorous-assessment-social/63764)

## Related Content

---

### An Intelligent Motor-Pump System

P. Giridhar Kini (2010). *Intelligent Information Systems and Knowledge Management for Energy: Applications for Decision Support, Usage, and Environmental Protection* (pp. 400-422).

[www.irma-international.org/chapter/intelligent-motor-pump-system/36976](http://www.irma-international.org/chapter/intelligent-motor-pump-system/36976)

### The Negative Impact of ICT Waste on Environment and Health

Walied Askarzai (2011). *Green Technologies: Concepts, Methodologies, Tools and Applications* (pp. 1330-1343).

[www.irma-international.org/chapter/negative-impact-ict-waste-environment/51764](http://www.irma-international.org/chapter/negative-impact-ict-waste-environment/51764)

### Fuzzy Evaluation of Agricultural Water Conservancy Facilities in Reuse

Shen Shan Hanand Amit Sharma (2021). *International Journal of Agricultural and Environmental Information Systems* (pp. 39-52).

[www.irma-international.org/article/fuzzy-evaluation-of-agricultural-water-conservancy-facilities-in-reuse/280118](http://www.irma-international.org/article/fuzzy-evaluation-of-agricultural-water-conservancy-facilities-in-reuse/280118)

### Prediction of Soybean Price Trend via a Synthesis Method With Multistage Model

Zhiling Xu, Hualing Dengand Qiufeng Wu (2021). *International Journal of Agricultural and Environmental Information Systems* (pp. 1-13).

[www.irma-international.org/article/prediction-of-soybean-price-trend-via-a-synthesis-method-with-multistage-model/274049](http://www.irma-international.org/article/prediction-of-soybean-price-trend-via-a-synthesis-method-with-multistage-model/274049)

### Advanced, Sustainable, and Economic Construction Under Green Technologies During COVID-19: A Review of Construction Material During COVID-19

Shubha Khatri (2022). *Clean Technologies and Sustainable Development in Civil Engineering* (pp. 72-99).

[www.irma-international.org/chapter/advanced-sustainable-and-economic-construction-under-green-technologies-during-covid-19/305590](http://www.irma-international.org/chapter/advanced-sustainable-and-economic-construction-under-green-technologies-during-covid-19/305590)