

Chapter 9

Development of Facial Recognition in Clinical Decision Support

Hardianto Wibowo

 <https://orcid.org/0000-0002-8209-6434>


Universitas Muhammadiyah Malang, Indonesia

Mario Soflano

 <https://orcid.org/0000-0003-0758-1509>

Glasgow Caledonian University, UK

Wildan Suharso

 <https://orcid.org/0000-0002-8886-7068>

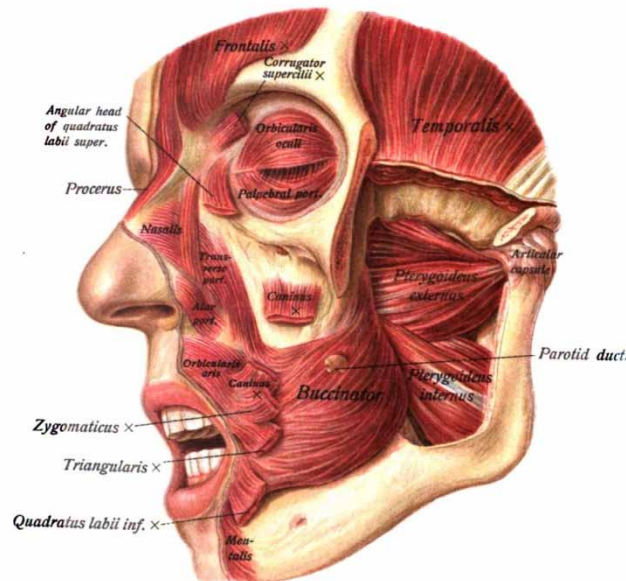
Universitas Muhammadiyah Malang, Indonesia

ABSTRACT

This chapter discusses the current state of the art of facial recognition technology for clinical decision support through a systematic literature review that identifies the medical areas where it is used, the source of facial datasets used, the machine learning approach and algorithms used, and how it has been evaluated. Findings show that the technology has been used in diagnosing genetic disorders, mental illness, and depression, and to train the algorithms, the studies identified used either publicly available datasets, published datasets from the literature, or they collected their own data. However, the majority of papers did not explicitly explain how these datasets were obtained. The finding also shows CNN is currently the most used ML algorithm for facial recognition while appearance-based is the most common approach. The evaluations in the shortlisted papers generally focus on the accuracy of the facial recognition capabilities, and the empirical evidence shows the advantage of the technology in supporting clinicians to diagnose symptoms through facial expressions.

DOI: 10.4018/978-1-6684-5092-5.ch009

Figure 1. Anatomy Facial Muscles (Sobotta, 1909)



INTRODUCTION

Facial recognition technology maps a person's facial data for verification or authentication purposes (Martinez-Martin, 2019). Gender, geographic region, age or character are the most common facial features that can be identified through the technology (Kristian et al., 2017; Wibowo et al., 2018; Kasim et al., 2017). The data can be used to identify a person for security purposes or animation that requires avatars to mimic human faces and facial expressions (Bibliowicz, 2005; Abrantes & Pereira, 1999; Delp & Loan, 2000). In the health domain, identification and analysis of changes in facial data in a series of facial expressions have been identified as one of the diagnostic processes to determine symptoms of diseases that would require measurement for its severity and immediate treatment. In the face anatomy, changes in facial expression are affected by the 7th cranial nerve, which innervate the facial muscles (Prendergast, 2013). Figure 1 shows the various parts of facial muscles. These changes can be identified by facial recognition technology by looking at activation areas for example, eyes, brow and cheeks are relaxed (a neutral expression), brows lowered and drawn together, upper eyelids are raised. The Ekman and Friesen (1976) proposed the Facial Action Coding System (FACS) method that breaks down facial expressions into individual components of muscle movement as Action Units that allows facial analysis to be performed per unit for more accuracy (Wibowo et al., 2019; Abrantes & Pereira, 1999).

Some diseases can affect the contraction of the facial muscles, and can be used to detect, for example, facial palsy (Cawthorne & Haynes, 1956; Volk et al., 2014), Bell's palsy (Gilden, 2004; Holland & Weiner, 2004; Baugh et al., 2013), neurological disorders such as Parkinson Plus (Piercy, 2005; Poewe & Wenning, 2007; Jin et al., 2020; Priebe et al., 2015), pain in infants (Kristian et al., 2017), and stroke and genetic diseases such as DiGeorge syndrome (Kruszka et al., 2017). According to the systematic analysis for Global Burden of Disease Study between 1990 to 2016, the four largest contributors of neurological disability-adjusted life-years were stroke, migraine, Alzheimer's and other dementias and

21 more pages are available in the full version of this document, which may be purchased using the "Add to Cart" button on the publisher's webpage:

www.igi-global.com/chapter/development-of-facial-recognition-in-clinical-decision-support/313786

Related Content

Application of Cognitive Network Analysis to Mine Operations: A Case Study at Chuquicamata OSHM – Codelco Chile

Leonardo P. Lavanderos, Ramón Morales and Abelardo Araya (2022). *International Journal of Strategic Decision Sciences* (pp. 1-13).

www.irma-international.org/article/application-of-cognitive-network-analysis-to-mine-operations/301546

An Intelligent Agent-Based Localization System in Underwater Wireless Sensor Networks

Ashish Kumar Dass, Sudhakar Das and Sudhir Ranjan Pattanaik (2023). *Constraint Decision-Making Systems in Engineering* (pp. 135-155).

www.irma-international.org/chapter/an-intelligent-agent-based-localization-system-in-underwater-wireless-sensor-networks/316954

Bat Algorithm With Generalized Fly for Combinatorial Production Optimization Problems: Case Studies

Latifa Dekhici, Khaled Guerraiche and Khaled Belkadi (2019). *Technological Innovations in Knowledge Management and Decision Support* (pp. 34-66).

www.irma-international.org/chapter/bat-algorithm-with-generalized-fly-for-combinatorial-production-optimization-problems/208745

Shifting Perspectives: A Process Model for Sense Making Under Uncertainty

Geoffrey Hill, Pratim Datta and William Acar (2015). *International Journal of Strategic Decision Sciences* (pp. 33-52).

www.irma-international.org/article/shifting-perspectives/124772

Towards a New Combination and Communication Approach of Software Components

Fadoua Rehioui and Abdellatif Hair (2016). *International Journal of Decision Support System Technology* (pp. 1-13).

www.irma-international.org/article/towards-a-new-combination-and-communication-approach-of-software-components/164438