

Chapter 4

Smart Video Surveillance Systems and Identification of Human Behavior Analysis

M. Sivabalakrishnan
VIT Chennai, India

R. Menaka
VIT Chennai, India

S. Jeeva
VIT Chennai, India

ABSTRACT

Smart surveillance cameras are placed in many places such as bank, hospital, toll gates, airports, etc. To take advantage of the video in real time, a human must monitor the system continuously in order to alert security officers if there is an emergency. Besides, for event detection a person can observe four cameras with good accuracy at a time. Therefore, this requires expensive human resources for real-time video surveillance using current technology. The framework of ATM video surveillance system encompassing various factors, such as image acquisition, background estimation, background subtraction, store, and further process like segmentation, people counting, and tracking are done in cloud environment briefly discussed in this chapter.

DOI: 10.4018/978-1-5225-8241-0.ch004

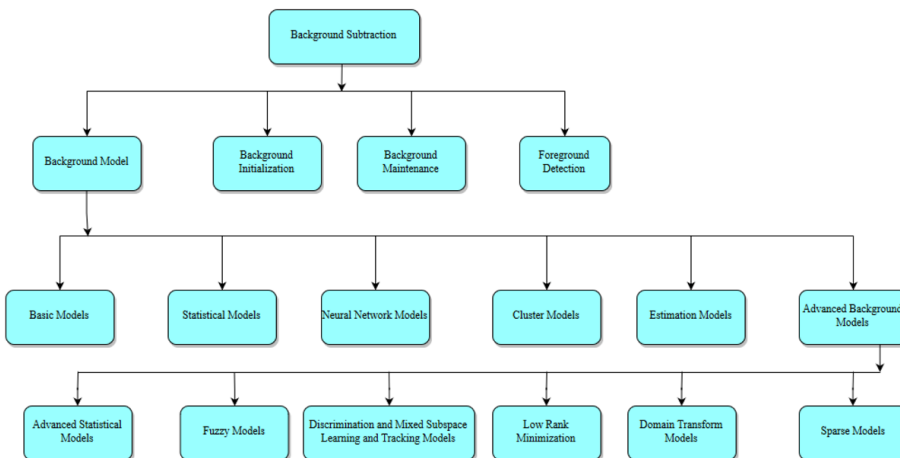
INTRODUCTION

Pedestrian detection is a vital and important task in several smart video surveillance systems. It offers the essential evidence for the semantic understanding of the video footages for video content analysis. It is a new technology for analyzing the video which includes video analytics, text analytics, and audio analytics. From this video, analytics has more challenging and gives a better understanding of the semantics of the video. Video Analytics utilizes numerical calculations to the screen, break down and oversee huge volumes of video. It carefully investigates video inputs; changing them into clever information which helps in making choices.

Video analytics applications can keep running at the inside (on servers or DVRs at the focal observing station), at the ‘edge’ (incorporated with cameras) or as a mix of both. The ‘edge’ arrangements are perfect to find live investigation. Focal continuous preparing can come up short on steam in view of the no. of cameras in the system, preparing power and the system data transmission; while in the ‘edge’ arrangement, each camera has committed handling. Clients with constrained transmission capacity on their systems can settle on an investigation arrangement at the ‘edge’, so just data on suspicious episodes gets sent through the system; and thus, doesn’t go through system transfer speed.

Some run of the mill utilization of Video Analytics in security and surveillance includes, Security Access Point Monitoring, Intrusion Detection/Perimeter Protection, License Plate Recognition, Object Removal, Camera Tampering, Abandoned Object. Current video analytics solutions do work, however, in a compelled domain is a major limitation of video analytics.

Figure 1. Overview of background subtraction methods



32 more pages are available in the full version of this document, which may be purchased using the "Add to Cart" button on the publisher's webpage: www.igi-global.com/chapter/smart-video-surveillance-systems-and-identification-of-human-behavior-analysis/222216

Related Content

Telephone Handset Identification by Collaborative Representations

Yannis Panagakiss and Constantine Kotropoulos (2013). *International Journal of Digital Crime and Forensics* (pp. 1-14).

www.irma-international.org/article/telephone-handset-identification-by-collaborative-representations/103934

The Security Risks and Challenges of 5G Communications

Young B. Choi and Matthew E. Bunn (2021). *International Journal of Cyber Research and Education* (pp. 46-53).

www.irma-international.org/article/the-security-risks-and-challenges-of-5g-communications/281682

Base Erosion and Profit Shifting (BEPS) in International Taxation System: The Case of Mauritius in the Light of OECD/G20 Initiatives

Ambareen Beebeejaun, Rajendra Parsad Gunputh and Abdul Rafay (2023). *Concepts, Cases, and Regulations in Financial Fraud and Corruption* (pp. 259-277).

www.irma-international.org/chapter/base-erosion-and-profit-shifting-beps-in-international-taxation-system/320026

Analysis of the Cybercrime with Spatial Econometrics in the European Union Countries

Vítor João Pereira Domingues Martinho (2015). *Handbook of Research on Digital Crime, Cyberspace Security, and Information Assurance* (pp. 483-499).

www.irma-international.org/chapter/analysis-of-the-cybercrime-with-spatial-econometrics-in-the-european-union-countries/115777

A Novel Verification Protocol to Restrict Unconstitutional Access of Information From Smart Card

Ajay Kumar Sahu and Ashish Kumar (2021). *International Journal of Digital Crime and Forensics* (pp. 65-78).

www.irma-international.org/article/a-novel-verification-protocol-to-restrict-unconstitutional-access-of-information-from-smart-card/267150