

Chapter 26

Automatic Localization of the Optic Disc Center in Retinal Images Based on Angle Detection in Curvature Scale Space

A. Elbalaoui

Université Sultan Moulay Slimane, Morocco

M. Boutaounte

Université Sultan Moulay Slimane, Morocco

Mohamed Fakir

Université Sultan Moulay Slimane, Morocco

A. Merbouha

Université Sultan Moulay Slimane, Morocco

ABSTRACT

Digital images of the retina is widely used for screening of patients suffering from sight threatening diseases such as Diabetic retinopathy and Glaucoma. The localization of the Optic Disc (OD) center is the first and necessary step identification and segmentation of anatomical structures and in pathological retinal images. From the center of the optic disc spreads the major blood vessels of the retina. Therefore, by considering the high number of vessels and the high number of the angles resulted from the vessels crossing, the authors propose a new method based on the number of angles in the vicinity of optic disc for localization of the center of optic disc. The first step is pre-processing of retinal image for separate the fundus from its background and increase the contrast between contours. In the second step, the authors use the Curvature Scale Space (CSS) for angle detection. In the next step, they move a window about the size of optic disc to count the number of corners. In the final step, they use the center of windows which has the most number of corners for localizing the optic disc center. The proposed method is evaluated on DRIVE, CHASE_DB1 and STARE databases and the success rate is 100, 100 and 96.3%, respectively.

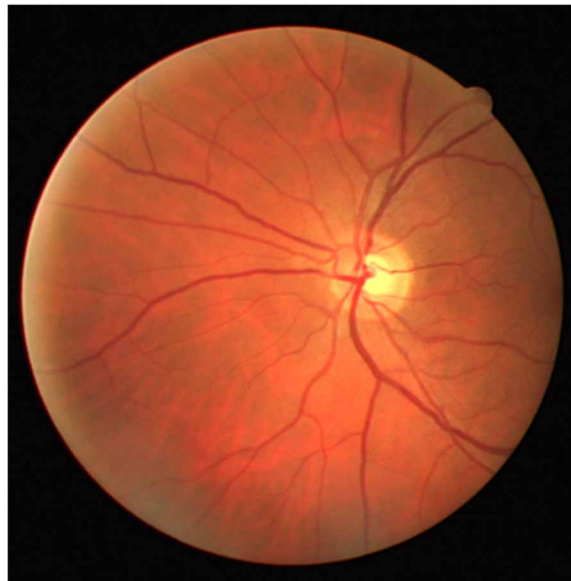
DOI: 10.4018/978-1-5225-0571-6.ch026

1. INTRODUCTION

Retinal imaging is increasingly used in large scale, to studies for detection of glaucoma, diabetic retinopathy age-related macular degeneration and cardiovascular disease. When an ophthalmologist uses an ophthalmoscope to look into the eye, he sees the view of the retina represented in (Figure 1). Retina is the innermost layer of the eye and composed of many important anatomical features. The main structures of a fundus retinal image were defined as the OD, fovea, and blood vessels. The optic nerve is one of the most important organs in the human retina. The localization of the OD is the first step of most identification, segmentation, diagnosing some diseases on retinal images such as diabetic retinopathy (A. Deghani, 2012) and retinal recognition (M Ortega1, 2009). Detection of the optic nerve is a key preprocessing component for the automatic extraction of the anatomical structures of the retina (X. Zhu, 2010).

Identification of the OD disc is an important step in the detection and analysis of the anatomical structures and pathological features in the retina. A crucial preliminary step in computer-aided analysis of retinal images is localization of the OD center, several researchers have proposed methods for these purposes (RM Rangayyan, 2010). Zhu et al. (X. Zhu, 2010) proposed a method based on edge detection using the Sobel operators and detection of circles using the Hough transform were employed to localize OD. RM Rangayyan et al. uses a method based on the detection of the vessels using Gabor filters, detection of peaks in the node map obtained via phase portrait analysis and an intensity-based condition. Tobin et al. (K.W. Tobin, 2007) proposed a method relies on the accurate segmentation of the vasculature of the retina followed by the determination of spatial features describing the density, average thickness, and average orientation of the vasculature in relation to the position of the optic nerve. H. Ying et al. (H. Ying, 2007) proposed an algorithm to differentiate the OD from other bright regions such as hard exudates and artifacts, based on the fractal dimension related of blood vessel. The OD was segmented by local histogram analysis. The scheme was tested with the DRIVE dataset and identified the OD in 39 from 40 images. Mendonça (A.M. Mendonça, 2013) proposed a method for automatic location of

Figure 1. Retina as seen through an ophthalmoscope



12 more pages are available in the full version of this document, which may be purchased using the "Add to Cart" button on the publisher's webpage:
www.igi-global.com/chapter/automatic-localization-of-the-optic-disc-center-in-retinal-images-based-on-angle-detection-in-curvature-scale-space/159734

Related Content

Strategic Integration of AI-Driven Haptic Systems in Healthcare Management and Operations

Perna Srivastava, Ritu Raj Choudhary, Devendra Kumar Somwanshi, Urvashi Bhamboo, Mohamed M. Awadand Richa Sharma (2025). *Integrating AI With Haptic Systems for Smarter Healthcare Solutions* (pp. 277-300).

www.irma-international.org/chapter/strategic-integration-of-ai-driven-haptic-systems-in-healthcare-management-and-operations/379703

The Urine Drug Screen in the Emergency Department: Overuse, Technical Pitfalls, and a Call for Informed Consent

Megan Yuand Charles Desmond Donohoe (2022). *International Journal of Health Systems and Translational Medicine* (pp. 1-11).

www.irma-international.org/article/the-urine-drug-screen-in-the-emergency-department/282703

Developing More Effective and Adaptive U.S. Governmental Healthcare Leaders

Amalisha Sabie Aridi (2022). *International Journal of Health Systems and Translational Medicine* (pp. 1-25).

www.irma-international.org/article/developing-more-effective-and-adaptive-us-governmental-healthcare-leaders/314579

Impact of B2B E-Commerce and Supply Chain Investments in Hospitals

Chad Lin, Geoffrey Jallehand Yu-An Huang (2016). *Encyclopedia of E-Health and Telemedicine* (pp. 229-240).

www.irma-international.org/chapter/impact-of-b2b-e-commerce-and-supply-chain-investments-in-hospitals/151960

Significant Enhancement of Segmentation Efficiency of Retinal Images Using Texture-Based Gabor Filter Approach Followed by Optimization Algorithm

Upendra Kumar (2018). *Ophthalmology: Breakthroughs in Research and Practice* (pp. 53-68).

www.irma-international.org/chapter/significant-enhancement-of-segmentation-efficiency-of-retinal-images-using-texture-based-gabor-filter-approach-followed-by-optimization-algorithm/195761