

Investing in an Energy Management System: The Case of Quality Care Nursing Home

Mark R. Nelson
Rensselaer Polytechnic Institute, USA

John F. Mikullitz
ARAMARK Facility Services, USA

Adrienne S. Frank
Veteran Affairs Medical Center, USA

John A. Westney
Bellevue Woman's Hospital, USA

EXECUTIVE SUMMARY

This case presents the story of how a small- to medium-sized enterprise (SME) makes the decision to invest in an emerging technology. Specifically, the case looks at Quality Care Nursing Home, a 125-bed elderly care facility with roughly 200 employees. Advances in information technology yielded an opportunity for Quality Care to achieve savings of both financial and natural resources through the implementation of an energy management system (EMS) integrated into organizational decision making and management processes. In the case, Quality Care is considering investment in a new IT-enabled EMS in order to improve client satisfaction while reducing costs. The case describes the problem, energy management systems (which are an emerging technology), and how the business went about evaluating the need for the technology and making its case as to

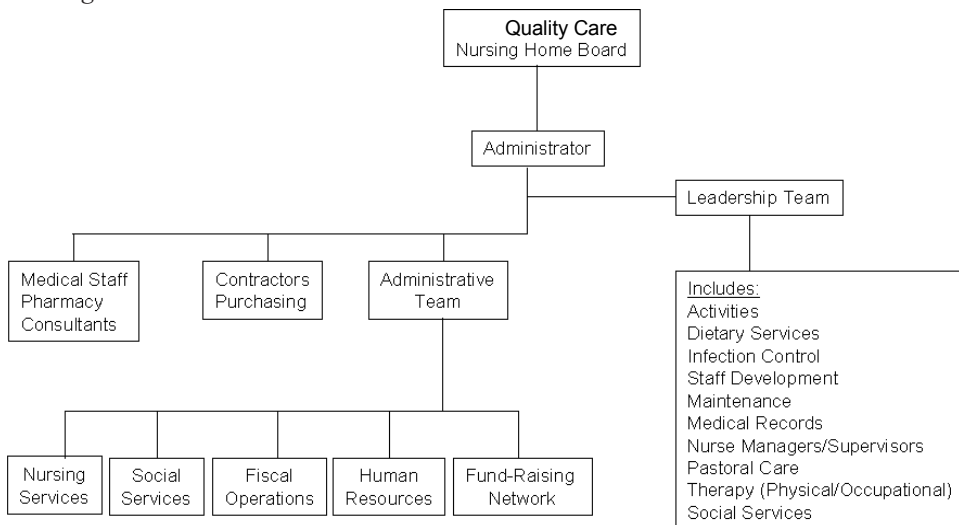
whether or not to invest in the technology. The case presents an interesting investment decision in terms of balancing the qualitative and quantitative costs and benefits of the proposed IT solution.

BACKGROUND

Located high on a hill overlooking the Hudson Valley, trees, fields and dairy farmland surround the 120-acre property of Quality Care Nursing Home, Inc. A religious order of nuns founded Quality Care in 1949, and continues to operate the facility today. In 1992, the original nursing home was replaced with a state-of-the-art building, containing three direct care floors and one floor dedicated to administrative functions, ancillary services, such as physical therapy, and the kitchen, environmental services, and maintenance. These functional areas occupy 60,000 square feet. In 1997, the nursing home was sold to R-Healthcare, Inc., a large healthcare group operated by a different religious order. In 2000, new construction expanded Quality Care to 68,000 square feet with the addition of a chapel and large meeting hall space.

The 200 employees working at Quality Care provide intensive and professional care 24 hours of every day in support of the needs of the progressively infirm elderly who are no longer able to live independently. The direct and indirect patient care is provided in an environment of compassion, accountability, respect, excellence, and other special services (C.A.R.E.S.) that define Quality Care's core values. Included in "accountability," Quality Care calls employees to responsible stewardship of the human and material resources and assets of the organization. They are to work together to be effective and efficient in the use of resources and to provide a safe environment and ecology. They require a reasonable financial return in order to provide resources needed to pay fair

Figure 1. This Diagram Shows the 2001 Organizational Chart for Quality Care Nursing Home



8 more pages are available in the full version of this document, which may be purchased using the "Add to Cart" button on the publisher's webpage: www.igi-global.com/chapter/investing-energy-management-system/44572

Related Content

Co-Creation between Food Allergy Customers and Restaurants using Mobile Devices

Mikako Ogawa, Ayaka Tanaka, Keiichi Noda and Donald L. Amoroso (2014). *Inventive Approaches for Technology Integration and Information Resources Management* (pp. 317-336).

www.irma-international.org/chapter/co-creation-between-food-allergy-customers-and-restaurants-using-mobile-devices/113187

Measuring Organizational Readiness for Knowledge Management

W. A. Taylor and M. A. Schellenberg (2005). *Advanced Topics in Information Resources Management, Volume 4* (pp. 93-114).

www.irma-international.org/chapter/measuring-organizational-readiness-knowledge-management/4632

A Novel Team Productivity Model for XP Teams

Farzaneh Tavakoli and Taghi Javdani Gandomani (2018). *Journal of Cases on Information Technology* (pp. 93-109).

www.irma-international.org/article/a-novel-team-productivity-model-for-xp-teams/212626

Chaos Theory as a Framework for Studying Information Systems

Gurpreet S. Dhillon and John Ward (2003). *Advanced Topics in Information Resources Management, Volume 2* (pp. 320-337).

www.irma-international.org/chapter/chaos-theory-framework-studying-information/4609

Developing Efficient Processes and Process Management in New Business Creation in the ICT-Sector

Arla Juntunen (2010). *Information Resources Management: Concepts, Methodologies, Tools and Applications* (pp. 346-364).

www.irma-international.org/chapter/developing-efficient-processes-process-management/54488