

Chapter 28

Teacher Effect Model for Impacting Student Achievement

Tina Heafner

University of North Carolina at Charlotte, USA

ABSTRACT

Teachers are a significant factor associated with student achievement. Research recognizes that the greatest determinate of student achievement is the teacher, yet questions remain as to what characteristics of teachers are the most influential and where these attributes can be influenced through professional development. This paper explores the teacher effect through the evaluation of the interaction among characteristics of four teacher profiles using Surveys of Enacted Curriculum®. This Teacher Effect Model was designed to evaluate the future impacts of sustained professional development.

INTRODUCTION

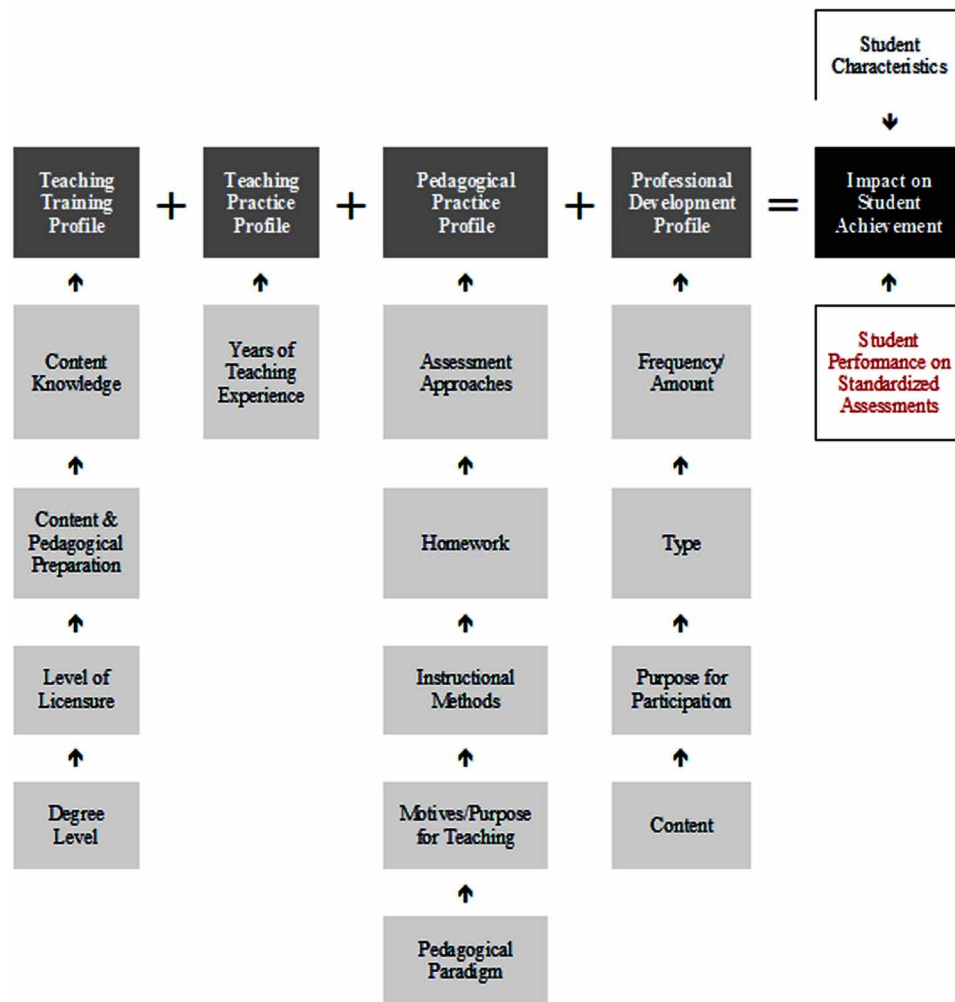
The purpose of this study was to examine the teacher effect on student achievement as defined by a composite of four teacher effect profiles. These profiles include characteristics of teachers such as: teacher training, teaching experiences, pedagogical practices, and professional development. The interaction among these characteristics were used to identify the greatest determinates of student achievement in mathematics. The model was also used to identify targeted needs for professional development based upon data from student outcomes. Math achievement was evaluated based on student performance on state-mandated standardized tests. This Teacher Effect Models provides a framework for future analyses of the effect of intervention strategies for evaluating and improving professional development.

This research is part of The North Carolina Partnership for Improving Math and Science (NC-PIMS), a five-year grant funded by the National Science Foundation and the Department of Education to improve student outcomes in Math and Science through policy, professional development, and parent programs. A cascading model of program delivery provides training to 11 facilitators, 367 lead teachers and over 6,000 classroom teachers in mathematics. The goal of the grant is to provide quality, comprehensive training to teachers in an effort to decrease the achievement gap in mathematics while increasing the overall outcomes for all students in the participating districts. The Teacher Effect Model is being used

DOI: 10.4018/978-1-5225-0978-3.ch028

Teacher Effect Model for Impacting Student Achievement

Figure 1. The Teacher Effect Model



to determine the effectiveness of professional development offered by this NSF grant and inform and direct future professional development plans to maximize the effect of these interventions in improving student achievement.

The guiding research questions for this study are:

- What teacher characteristics best account for student achievement?
- Are there significant differences within teacher effect profiles in determining student achievement?

The Teacher Effect Model measures the effect of various characteristics of teachers and the interaction among these on student achievement. The Teacher Effect Model is a composite of four profiles: *teacher training*, *teaching experience*, *pedagogical practices*, and *professional development*. The four profiles were selected based upon an extensive research review of the variables that affect teacher quality. The premise of this model is that teacher quality can be linked to student achievement; therefore, under-

15 more pages are available in the full version of this document, which may be purchased using the "Add to Cart" button on the publisher's webpage:

www.igi-global.com/chapter/teacher-effect-model-for-impacting-student-achievement/167309

Related Content

Defence

(2018). *The Morality of Weapons Design and Development: Emerging Research and Opportunities* (pp. 52-77).

www.irma-international.org/chapter/defence/192261

Modeling a Predictive Control of Human Locomotion Based on the Dynamic Behavior

Joao Mauricio Rosario, Leonimer Flavio de Melo, Didier Dumur, Maria Makarov, Jessica Fernanda Pereira Zamaiaand Gabriel Fillipe Centini Campos (2021). *Research Anthology on Emerging Technologies and Ethical Implications in Human Enhancement* (pp. 217-232).

www.irma-international.org/chapter/modeling-a-predictive-control-of-human-locomotion-based-on-the-dynamic-behavior/273078

Prospects and Challenges of Teaching Religious Ethics in Nigerian Universities

Finomo Julia Awajiusuk (2015). *Contemporary Issues Surrounding Ethical Research Methods and Practice* (pp. 306-323).

www.irma-international.org/chapter/prospects-and-challenges-of-teaching-religious-ethics-in-nigerian-universities/130608

Defining Corporate Social Responsibility for Developing and Developed Countries: Comparing Proposed Approaches

Duane Windsor (2017). *Comparative Perspectives on Global Corporate Social Responsibility* (pp. 1-27).

www.irma-international.org/chapter/defining-corporate-social-responsibility-for-developing-and-developed-countries/162803

Cross-Country and Cross-Sector CSR Variations: A Comparative Analysis of CSR Reporting in the U.S., South Korea, and Turkey

Altay Dikeç, Victor Kaneand Nejat Çapar (2017). *Comparative Perspectives on Global Corporate Social Responsibility* (pp. 69-95).

www.irma-international.org/chapter/cross-country-and-cross-sector-csr-variations/162806